



TRADING & CONTRACTING

-
- i. General Manager's Message
 - ii. Quality Policy
 - iii. The Company
 - iv. Activities
 - v. Workshop and Stockyard
 - vi. Administrative Office
 - vii. Bankers
 - viii. Organizational Chart
 - ix. Total Company Staff Breakdown
 - x. Fixed Assets
 - xi. Projects (General Construction)
 - xii. Strength
 - xiii. Sales Stocks
 - xiv. Products
 - xv. Suppliers
 - xvi. Quality Control
 - xvii. Engineering Projects
 - xviii. Computer Aided Design
 - xix. Precision Equipment's
 - xx. Plants and Machinery
 - xxi. Packing
 - xxii. Key Success
 - xxiii. Projects (Marbles, Ceramics, Sanitary Wares & Roof Tiles)
 - xxiv. Company Registration

GENERAL MANAGER'S MESSAGES

GULF STYLE ENGINEERING PROJECTS is indebted to everyone who supported us from day one of our operation since inception. Our priority is not mere sale of our service, it is much beyond and we desire every single client's absolute satisfaction of our services.

“OUR PHILOSOPHY IS UNMATCHED QUALITY DELIVERABLES”

We are proud of our steady and consistent growth and thanks to people like you.

HAZIM S. ABU HASHIM

General Manager

QUALITY POLICY:

We **GULF STYLE ENGINEERING PROJECTS** is committed to render Engineering contract services to the entire satisfaction of the costumer's through effective implementation of **Quality Management System (QMS)**. QMS is stablshed, documents, implemented and maintained on the organization.

We Accomplished this through the Objectives of:

- Understanding the Customer's Needs
- Deployment of Quality Culture and Functions
- Procurement of Quality Products
- Ensuring the Requirements of Safety & Protection
- Reliable and Timely Service
- Enhancing Customer Satisfaction
- Effective Utilization of Resources

THE COMPANY

Gulf Style Engineering Projects is a professional firm specializing in Contracting and Construction Works established since 2001 as a Limited Liability Organization. We are based in Doha, State of Qatar. Since its inception, the company has excelled in the field of Decoration up to the entire satisfaction of its esteemed customers. With the most encouraging and continuing support of its valued clients, the company has achieved phenomenal growths during these years.

Gulf Style Engineering Projects is a favorite choice for Engineering Construction and Decoration. Including of all our branches, **Gulf Style Engineering Projects** is giving diverse portfolio encompasses Construction, Decoration, Electro-Mechanical planning, supply of building materials and all kind of service. No matter how challenging a project or remote its location, chance are **Gulf Style Engineering Projects** can handle it. That is because we bring an unmatched combination of knowledge, skill, experience, and customer commitment to every job.

A high enterprises group manages the company with the back up of well qualified Engineers, Administrative Staff, high skilled technician and workers.

We are also a leading distributor of **Ceramic and Porcelain Tiles, Marbles and Granite, and Sanitary Wares.**

ACTIVITIES

Stockiest, Suppliers, Fabricators, and Installation/Fixing of Marbles and Granite, Cladding, Flooring, Staircases, Vanity Counters, Kitchen Tops, and other profile and art work with granite, marble and other dimensional stones as per customer's requirements. (A list of few important projects executed by the company is attached herewith).

WORKSHOP & STOCK YARDS

A well equipped and mechanized workshop to handle all kinds of marble/granite cutting, polishing, chamfering, and other profile works is located at Industrial Area Street -15.

ADMINISTRATIVE OFFICE

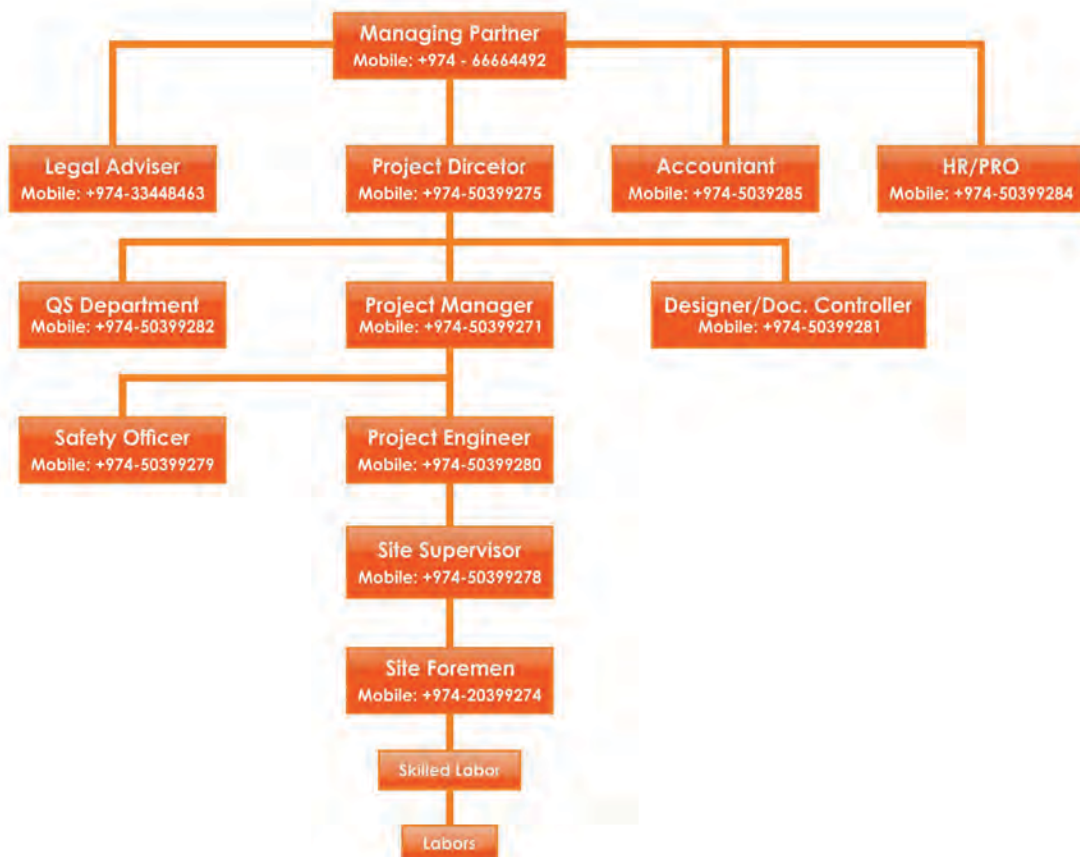
Salwa Road | Zone- 55 | Unit -29 | Street -340 | G2 Building |
Doha - Qatar

Bankers

Qatar Islamic International Bank
Main Branch
Doha-Qatar

Doha Islamic Bank
Salwa Road Branch
Doha-Qatar

COMPANY ORGANIZATION CHART



TOTAL COMPANY STAFF BREAKDOWN

Project Managers	02
Project Engineers	03
Safety Engineers	02
QA/QC Engineers	02
Mechanical Engineers	01
Draughtsman	05
Project Coordinators	03
Surveyors	02
Workers	150
Frameworks Laborers	20

We foster an environment that cultivates teamwork and achievement. We towards key goals through open communication, mutual support and continuous training and development. Respecting differences and building upon our strengths we value individual potential and reward achievements. We acts with uncompromising integrity, both as an individuals and as an organization.

FIXED ASSETS

MACHINERY TOOLS	QTY.
1. Compressor Compare Holman/Broom Wade	03
2. Compactor (Plate)	05
3. Tele Hander Caterpillar	01
4. Half Lorry Nissan	01
5. Water Tanker GMC	01
6. Electrical Bar Bender	02
7. Electrical Steel Cutter	05
8. Mechanical Wrench	02
9. Sawing Machine	05
10. Generator 50KVA – Dawson Keith	01
11. Generator 60KVA – Caterpillar	01
12. Generator 21KVA – Lister	02
13. Generator 5/3/2.5/1.8KVA	07
14. Concrete Mixer	02
15. Power Float	02
16. Hand Roller Compactor	01
17. Jack Hammer	03
18. Water Pump	12
19. Vibrator	08
20. Manual Steel Cutter	12

FIXED ASSETS

Jacks/Scaffoldings	QTY.
1. Jacks	5,080
2. RMD Scaffoldings	832
3. Scaffolding	1,500

Site Office/Survey Equipment	QTY.
1. Porta Cabin 8x4	02
2. Porta Cabin 6x3	02
3. Porta Cabin 3x3	03
4. Theodolite Manual	01
5. Theodolite Digital	01
6. Level	03

Projects (General Construction)

Projects : New Mitsubishi Garage @ Industrial Area
Clients : NBK Real State
Value : QR. 53,170,000
Duration : Completed

Projects : 43 Villa @ Mamoura - Doha
Clients : Sheikh Ahmed Bin Saife Al Thani
Value : QR. 35,600,000
Duration : Completed

Projects : 28 Villa @ New Salata
Clients : Sheikh H. Al-Thani
Value : QR. 26,170,000
Duration : Completed

Projects : 36 Villa G+1+Boundary @ Markhiya
Clients : Shiek Ahmed Bin Khalifa Al Thani
Value : QR. 24,620,000
Duration : Completed

Projects (General Construction)

Projects : Decoration Works for Mitsubishi
Showroom @ Ras Abu-Aboud
Clients : NBK Real State
Value : QR. 5,180,000
Duration : Completed

Projects : Used Car Showroom (Mercedes Benz
& Car Park Area)
Clients : Mercedes Benz
Value : QR. 4,500,000
Duration : Completed

Projects : LG Showroom @ Old Airport
Clients : Video Home
Value : QR. 17,700,000
Duration : Completed

Projects : 10 Villa @ Duhail (Doha North)
Clients : Mr. Ebrahim Salih A B Al-Mohannadi
Value : QR. 12,300,000
Duration : Completed

Projects (General Construction)

Projects : 3 Villa & Outside Majles @ Al Sahailya
Clients : Mr. Nayef Al Zubia
Value : QR. 6,500,000
Duration : Ongoing

Projects : G1 + PH & Out Building @ Al Wajba
Clients : Mr. Fahad Ali A Al Maadeed
Value : QR. 2,270,000
Duration : Ongoing

Projects : G1 + PH & Out Building @ Al Khor
Clients : Mr. Amer Ali A A Al Humaidi
Value : QR. 1,450,000
Duration : Ongoing

Projects : G1 + PH & Out Building @ Al Khor
Clients : Mr. Khalil Ali M Sharshani
Value : QR. 1,225.000
Duration : Ongoing



43 Villas @ Mamoura





10 Villas @ Duhail





36 Villas G+1+Boundary @ Markhiya





New Mitsubishi Garage @ Industrial Area St. 41





LG Showroom @ Old Airport





Villa + Majles @ Al Sahailya

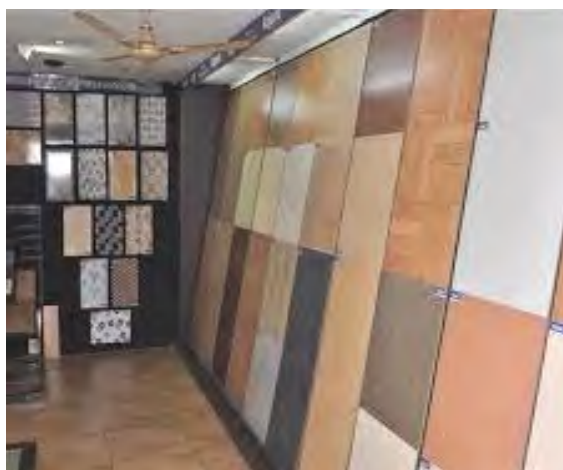
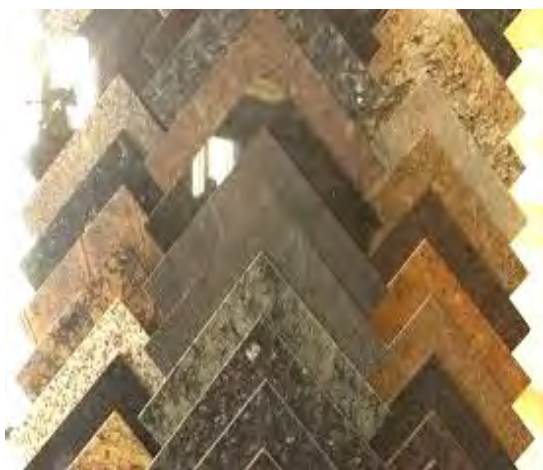




Al Waab City @ Salwa Road



BUILDING MATERIALS



SALES AND STOCKS

A wide spread yard of **Gulf Style Engineering Projects**, situated in Industrial Area Street no. 38, vast range of Ceramic, Granite, Marbles, and other Decorative Stone, Ceramics/Porcelain Tiles, and Sanitary Wares from which the customers are free to select color combinations, patterns, textures, and models that meets their individuals requirements.

A team of well educated and highly trained staff who are effectively guiding the customers to make the most appropriate selection is one of the secrete behind the success of Gulf Style Engineering Projects.

We thrive on challenge and accomplishment. We are trusted to take full accountability of our projects and maximize the allocation of resources in order to provide what our clients requirements.

PRODUCTS

Gulf Style Engineering offers a range of products of the highest quality which are produced from the best available sources in the world like:

- ITALY
- SPAIN
- GREECE
- BRAZIL
- PORTUGAL
- TURKEY
- INDIA

WATER JET CUTTING MACHINE



STRENGTH

We engage our clients and are determined to understand their needs. We engineer value through transforming creative thinking into reality. We work fast deliver successfully and take great pride as in the number of repeat clients as a measure of our achievements. We trusted to set and achieve high standards through advance technological capabilities by continuously updating processes, attracting the best talent and modernizing thinking. Our culture of continuous and never ending quality improvement transcends functional boundaries and is driven by excellence.

Our company constantly conduct research to predict market trends. Constantly increasing sales for the last five years demonstrates the strategy is effective in providing customers satisfaction.

Our highly skilled laborers are well versed with product finishing methods and have through understanding of maintaining premium quality measures. We assure to deliver only perfect products to our clients without compromising with the quality.

SUPPLIERS:

Gulf Style Engineering is the distributor of the following company here in Doha-Qatar.

CERAMICS AND PORCELAINS		
1	VITRA	TURKEY
2	AET- OPERA GROUP S.R.L.	ITALY
3	SIL CERAMECHI	ITALY
4	CERAMICA LIBRA	ITALY
5	GRUPPO CBS KIS CERAMICHE	ITALY
6	GRUPPO CBS CERAMICA LA GUGLIA	ITALY
7	RELONDA CERAMICA	SPAIN
8	ALTOGLASS	SPAIN
9	NAVARTI CERAMICAS	SPAIN

10	DREAMTILE, S.L.	SPAIN
11	INTERMARMOR, S.L.	SPAIN
12	STONEHEGEN, S.L.	SPAIN
13	LAZZARINI GIUSEPPE, S.R.L.	SPAIN
14	SERENI COPERTURE	ITALY

SANITARY WARES		
1	VITRA	TURKEY
2	INCEA S.P.A.	ITALY
3	VALADARES	PORTUGAL

VITRA is one of the world's top sanitary ware and tiles production facilities in terms of product variety and capacity, technology, and quality. High-pressure casting, rapid drying molds, fettling robots in casting shops, and barcode follow-up makes its ceramic sanitary ware operation one of the most technologically advanced anywhere. This is also true at the tile plant, which manufactures wall and floor tiles, porcelain floor tiles, swimming pool products and complementary pieces. Separate plants in the complex produce building chemicals bathroom accessories, and shower system.

AET brand of OPERA GROUP S.R.L. has synonymous with quality since long. Special attention is paid from selection of raw materials to technology evolution. This has enabled them to reinforce to corporate image in the market. Company is determined to provide the best and that is the way to guarantee satisfaction.

SIL CERAMICHE has been 50 years in the business. They a complete range of floor and wall ceramic tiles and porcelain tiles for all interior and exterior of your home. SIL CERAMICHE always gives the market needs to enable guarantee customers satisfaction.

CERAMICA LIBERA has been on the market since 1997. The passion, the ideas and the way of increasing has not been forcing us to forget our first way to make all better: listen, just listen our customers ideas in in order to change the market needs into real solutions. CERAMICA LIBERA is offering a selection of items in order to meet the requirements of all our customers all over the world.

GRUPPO CBS KIS CERAMICHE has been established for over 35 years on the international market, attentive as ever to artistic and manufacturing changes in the difficult world of ceramic floor tiles wall paneling. Today, Kis Ceramics is part of a Group of Companies whose productive capacity is ranked amongst the top ten Italian ceramic firms.

GRUPPO CBS CERAMICA LA GUGLIA has been in the industry for 50 years. The company has evolved steadily over the years, all the while endeavoring to keep cost to minimum. The eighties saw a difficult period of transformation, both in terms of production and company structure. The whole team will continue to roll up its sleeves, working harder and smarter to stay ahead off the competition, all the while ensuring that Italy remains the hallmark of superior quality.

REALONDA CERAMICA started since 1952. The company has adapted to the technological advance in order to offer its customer best quality of product and conscientious service. Realonda shows today how it continues to grow, always looking to the future and striving to achieve both quality and service, concepts which define the identities them. Using always the most advanced technology and investigation available, in developing each of their products.

ALTTOGLASS was founded in 2001, specialized in manufacturing and commercializing glass mosaics. Alttoglass innovates without relinquishing the classicism know-how that characterizes the firm, always remain at the forefront of new emerging trends, with successive collections that are always a great successes.

NAVARTI CERAMICAS established itself as one of the worlds leading forces in the manufacture and export of ceramic and porcelain wall and floor tiles. Navarti Ceramicas expands and diversifies, sitting itself up as major generalist company in the leading position both nationally and internationally as able to offer one of the widest ranges in the Spanish Ceramicas Sector.

INCEA S.P.A. is one of the Italian companies that serve as reference for the production of choice, vitreous china sanitary wear. Its proposal unfold in a wide range of sanitary fittings characterized by great functionality and typical Italian design. INCEA S.P.A. booth on domestic market and abroad, where the company has asserted itself in more than 30 countries.

FABRICA CERAMICA DE VALADARES has dedicated itself to the manufacture of ceramics, starting with bricks and tile manufacturing and later moving to the production of ceramic sand stone, ornamental ware, glazed tiles, sanitary wares, ceramic bathroom fittings, and mosaic work. Since the 90s, Ceramica de Valadares has exclusively manufacturing sanitary wares. Throughout this time it has sought partnership with raw material and goods supplier in order to maintain relationship of mutual responsibility and benefit.

QAULITY CONTROL:

As part of their firm commitment to supply and install decorative stones of only the highest standard **Gulf Style Engineering Projects** follows strict procedures that guarantee the quality of our customer, deserve. In order to ensure the quality maintenance in all aspect of work, **Gulf Style Engineering** scrutinizes the following criteria throughout the duration of project.

- **Control Consistency**
- **Precision Cutting**
- **Automated Polishing**
- **Fine Edge Detailing with Distressed, Antiqued Edges**
- **Professional Packing to Guarantee Safe Transportation**
- **High Quality Installation Works**

Excellence is our standard and we maintain it consistently adopting a strict Quality Management System. All our business activities are governed by a well documented quality policy and we operate our quality control operations relying on cutting-edge technology. Finished products are duly inspected before being delivered to the client.

STOCK YARD





ENGINEERING AND PROJECTS

Gulf Style Engineering have a well equipped Engineering Departments that consist of all the modern and sophisticated with a excellent team of competent and dedicated Engineers, Designers and Draftsman who excels in their trade. Skilled site staff including Engineers, Masons, Fixers, Polishers and Assistants, works under the close supervision of the Company's Managers who ensures that the materials being used have the approval of the client and that the site work is carried out in sequential order as per the project program and that all work is completed within the given period.

COMPUTER AIDED DESIGN

To discuss each project thoroughly with the respective clients to ensure that all designs do not serve practical purpose for which they are required, but also compliment and enhance the desired ambiance and character of the building as a whole. **Advance Computer Aided Design (CAD)** technology, which allows the creation of any design quickly and precisely being used in the Shop Drawing preparation for all projects.

PRECISION EQUIPMENTS

Products like marble need to be skillfully crafted to maintain its natural beauty, therefore, every processing phase requires great are and technical expertise. Once design and shop drawing have been finalized, Marble and Granite is cut precisely the shape and the size required and being polished, if required for installation. Modern equipment and machinery are used at every stage including computerized cutting machines to ensure that exact specifications are being met.

In all activities, we excel by using sophisticated technologies and a range of hi-tech machinery. A team of highly qualified and experience rich professional takes care of quality control in order to achieve the total customer satisfaction.

PLANT AND MACHINERY

1. Automatic Bridge Cutting Machine	-	6 Nos.
2. Length Cutting Machine	-	5 Nos.
3. Radial Polishing Machine	-	4 Nos.
4. Profile Cutting Machine	-	3 Nos.
5. Site Cutting Machine	-	12 Nos.
6. Grinding and Polishing Machine	-	145 Nos.

And other allied portable and handheld machine.

PACKING

Gulf Style Engineering take utmost care in packing their finished products. Finished product are being wrapped in separate polythene sheets to ensure scratch free surfaces. This individually packed slabs/tiles are then packed in wooden crates for transportation to concerned sites.

KEY SUCCESS

The key success of the company thus lies on being able to deliver the best value for money. This value measure not only in terms of competitive prices, but also the satisfaction of the customers.

Projects Completed List of Marbles, Porcelain & Ceramic Tiles

Projects : Villa B & C Compound for Al-Waab City
Clients : Arabtec Construction Company WLL
Value : QR. 50,330,000
Duration : Completed
Works : Supply and Fix Ceramic Tiles, Marbles and External Hard Landscape

Projects : Salwa Showroom Building A, C, D, & E
Clients : Imperial Trading and Contracting Co.
Value : QR. 11,270,890
Duration : Completed
Works : Supply and Fix Ceramic Tiles, Marbles and Sanitary Wares

Projects : New Mitsubishi Garage
Clients : NBK Real State
Value : QR. 3,820,000
Duration : Completed
Works : Supply and Fix Ceramic Tiles, Marbles, Sanitary Wares and Interlocks

Projects : 48 Villa Compound @ New Salata
Clients : Sheikh Ahmed Bin Saif Al-Thani
Value : QR. 2,870,100
Duration : Completed
Works : Supply and Fix Ceramic Tiles, Marbles and Sanitary Wares

Projects Completed List of Marbles, Porcelain & Ceramic Tiles

Projects : 43 Villa G+1
Clients : Sheikh Ahmed Bin Saif Al-Thani
Value : QR. 2,160,000
Duration : Completed
Works : Supply and Fix Ceramic Tiles, Marbles and Sanitary Wares

Projects : 24 Villa G+1 with Guard Room @ Duhail
Clients : Sheikh Ahmed Bin Saif Al-Thani
Value : QR. 1,930,000
Duration : Completed
Works : Supply and Fix Ceramic Tiles & Sanitary Wares

Projects : 33 Villa Compound @ Al Rayyan
Clients : N. Al-Kawari
Value : QR. 1,810,000
Duration : Completed
Works : Supply and Fix Ceramic Tiles, Marbles and Sanitary Wares

Projects : Fashion Showroom Building B
@ Salwa Road - Doha
Clients : Imperial Trading and Contracting Co.
Value : QR. 890,000
Duration : Completed
Works : Supply and Fix Ceramic Tiles, Marbles and Sanitary Wares

Projects Completed List of Marbles, Porcelain & Ceramic Tiles

Projects	:	16 Villa G+1 & External Kitchen @ Mamoura - Doha
Clients	:	Mohamed Al-Jaber Mazri
Value	:	QR. 740,000
Duration	:	Completed
Works	:	Supply and Fix Ceramic Tiles and Sanitary Wares
Projects	:	Sheikh Nawaf Residence Villa + Majlis
Clients	:	National Industrial Contracting Co.
Value	:	QR. 4,500,000
Duration	:	Completed
Works	:	Supply and Fix Ceramic Tiles, Marbles and Sanitary Wares
Projects	:	Petrol Station with Office @ Al Khor
Clients	:	Dhakim Petrol Station
Value	:	QR. 170,000
Duration	:	Completed
Works	:	Supply and Fix Ceramic Tiles & Interlocks
Projects	:	Mosque with Imam House @ Nuem
Clients	:	Ministry of Awqaf
Value	:	QR. 120,000
Duration	:	Completed
Works	:	Supply and Fix Ceramic Tiles, Marbles and Sanitary Wares

Projects Completed List of Marbles, Porcelain & Ceramic Tiles

Projects : LG Showroom @ Old Airport
Clients : Video Home
Value : QR. 630,400
Duration : Completed
Works : Supply and Fix Ceramic Tiles and Sanitary Wares

Projects : Aeromedical Center Building @ Al Udid
Clients : Imar Istanbul Contracting & Trading Co.
Value : QR. 627,022
Duration : Completed
Works : Supply Marble and Porcelain

Projects : 10 Villas @ Duhail
Clients : Rivera Trading & Contracting WLL
Value : QR. 581,683
Duration : Completed
Works : Supply and Fix Ceramic Tiles, Marbles and Sanitary Wares

Projects : Mosque No. 920 @ Al Rayaana
Clients : Rivera Trading & Contracting WLL
Value : QR. 200,000
Duration : Completed
Works : Supply and Fix Ceramic Tiles, Marbles and Sanitary Wares

Projects Completed List of Marbles, Porcelain & Ceramic Tiles

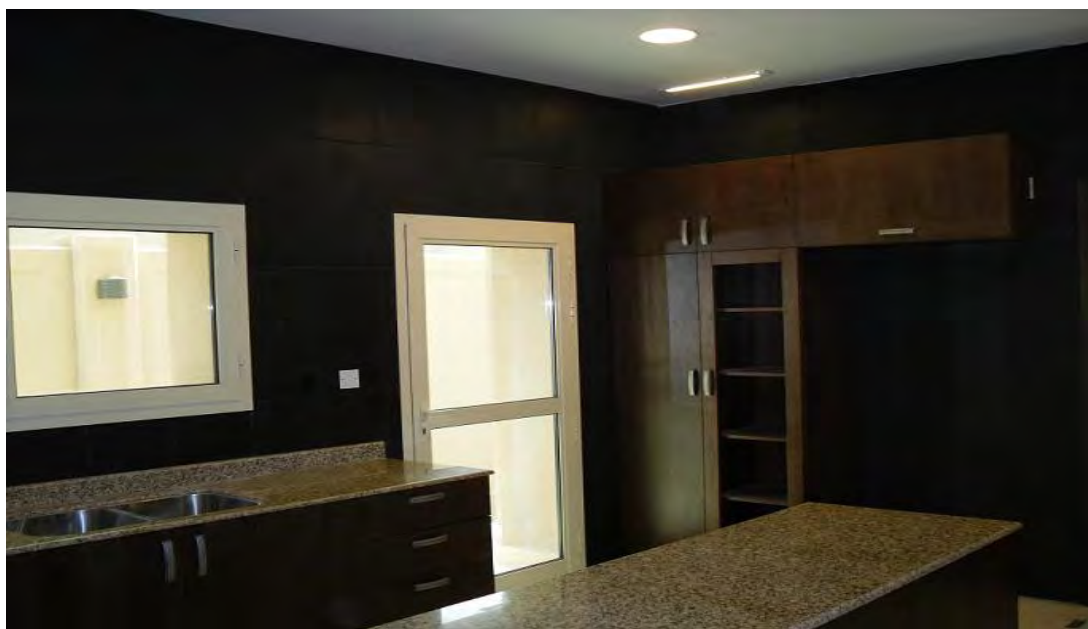
Projects : Villas @ Al Sahailya
Clients : Mr. Galawy Al Zubia
Value : QR. 154,530
Duration : Ongoing
Works : Supply and Fix Ceramic Tiles and Sanitary Wares

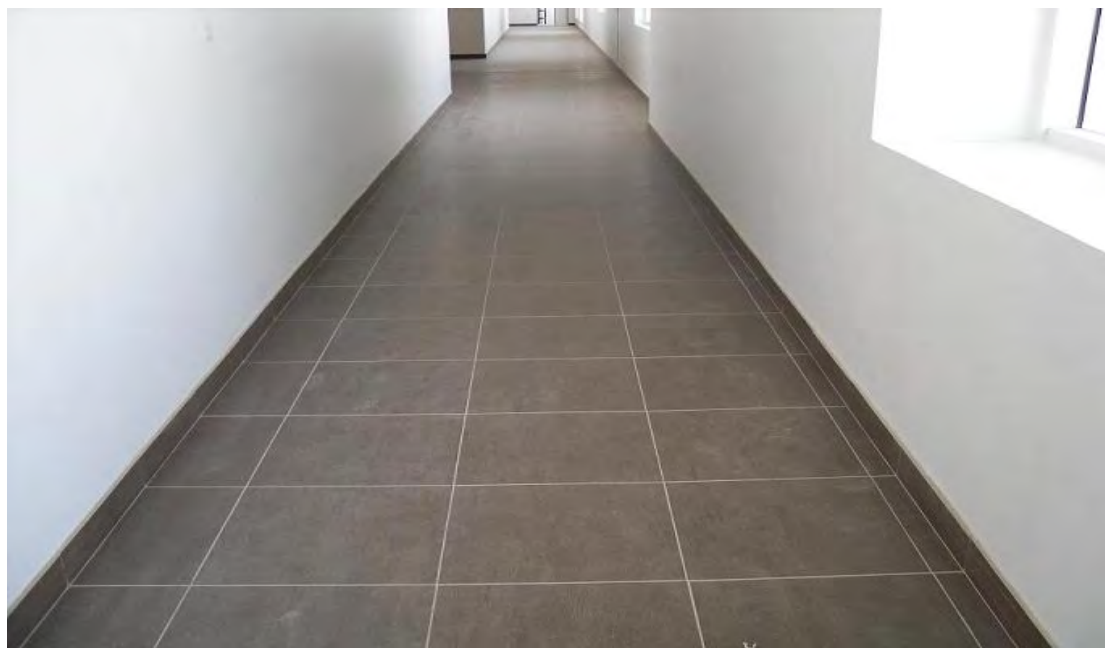
Projects : Villas @ Al Sahailya
Clients : Mr. Meshal Al Zubia
Value : QR. 132,500
Duration : Ongoing
Works : Supply and Fix Ceramic Tiles and Sanitary Wares





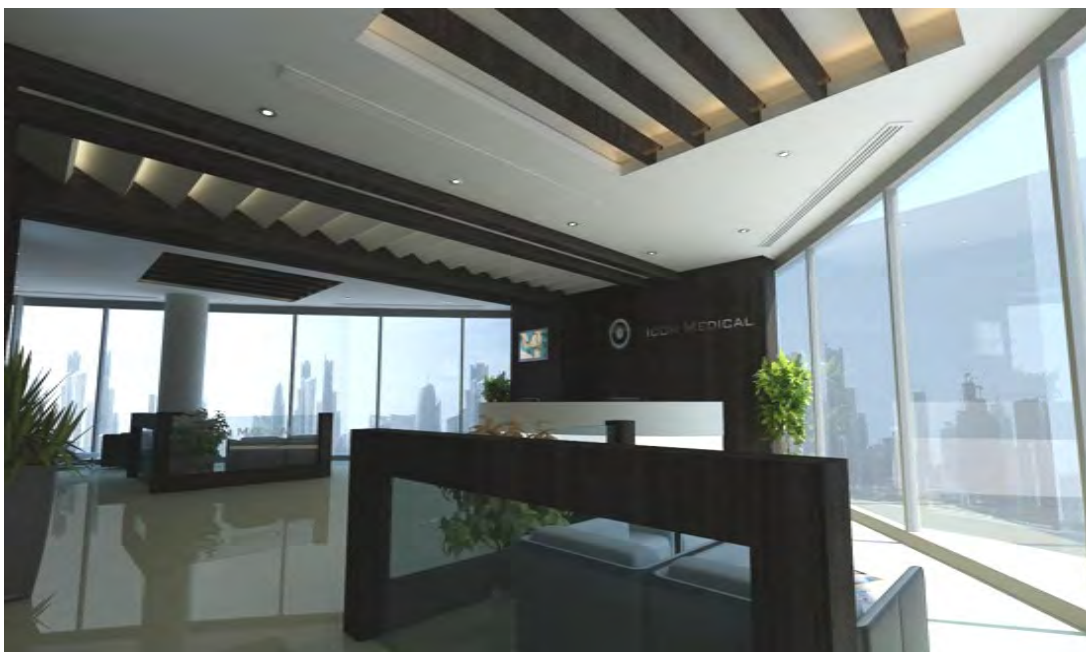








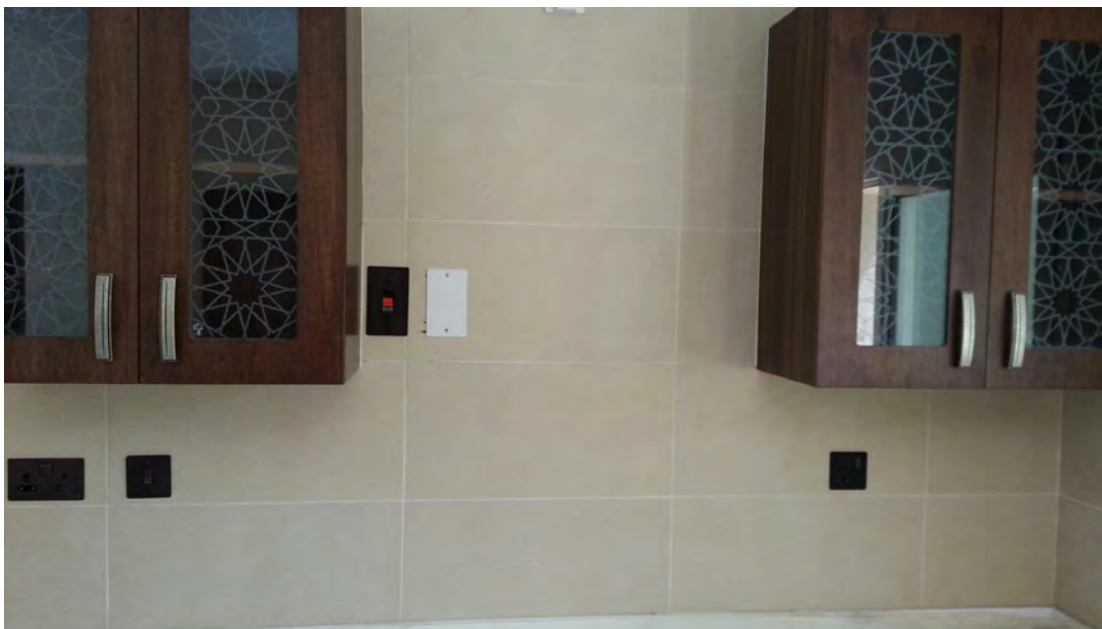






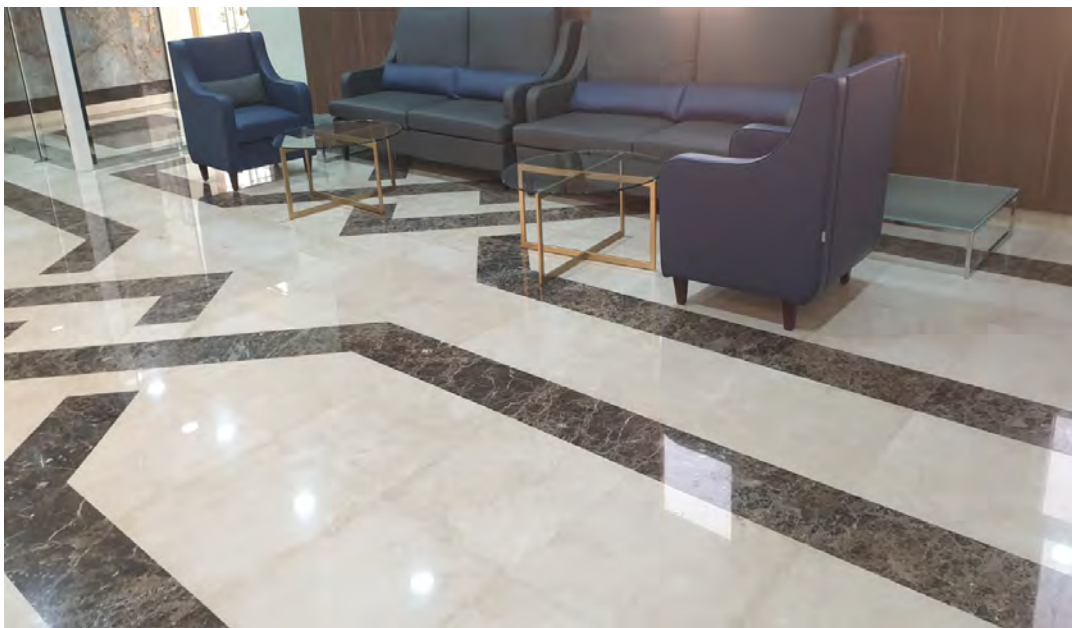














Gulf Style Group WLL as one of the leading professional firm, since 2001 specializing in supply and fixing Clay Roof Tiles. We are based in Doha, State of Qatar. Since its inception, the company has excelled in the field Decoration up to the entire satisfaction of its esteemed customers. With the most encouraging and continuing support of its valued clients, the company has achieved phenomenal growths during these years.

Suppliers: Gulf Style Group leading distributor of high rank quality producers from Italy and Spain and all around the world.



Projects Completed List of Clay Roof Tiles

Projects : Prototype 10 Villas @ Giardino Village Pearl
Clients : United Development Company - UDC
Value : QR. 577,743
Duration : Completed
Works : Supply and Fix Clay Roof Tiles

Projects : 17 Villa
Clients : Al Footoh Trading & Contracting Co.
Value : QR. 185,000
Duration : Completed
Works : Supply Roof Tiles

Projects : Villa @ Al Saad
Clients : Dr. Muayid Yunis
Value : QR. 157,000
Duration : Completed
Works : Supply & Fix Roof Tiles

Projects : 8 Villas Housing Compound @ Duhail
Clients : Third Dimension Trading WLL
Value : QR. 113,390
Duration : Completed
Works : Supply and Fix Clay Roof Tiles

Projects : Villa @ Rawdat Al Mamam
Clients : Mr. K. Al Khulify
Value : QR. 68,000
Duration : Completed
Works : Supply and Fix Roof Tiles

Projects Completed List of Clay Roof Tiles

Projects : Residential Building @ Fareej Abdel Aziz
Clients : Sheikh Ahmed Bin Gabr Al Thani
Value : QR. 73,293
Duration : Completed
Works : Supply and Fix Clay Roof Tiles

Projects : Giardino Village Substation-A @ Pearl
Clients : United Development Company - UDC
Value : QR. 67,225
Duration : Completed
Works : Supply and Fix Clay Roof Tiles

Projects : 3 Villa @ AlSailiya
Clients : Bandr Al Sagri
Value : QR. 65,000
Duration : Completed
Works : Supply Roof Tiles

Projects : Giardino Village Building HEX –B @ Pearl
Clients : United Development Company - UDC
Value : QR. 46,392
Duration : Completed
Works : Supply and Fix Clay Roof Tiles

Projects : Villa @ Ain Khalid
Clients : Mr. Khlifa Abdullah
Value : QR. 46,000
Duration : Completed
Works : Supply and Fix Roof Tiles

Projects Completed List of Clay Roof Tiles

Projects : Giardino Village Building CCTV @ The Pearl
Clients : United Development Company - UDC
Value : QR. 27,420
Duration : Completed
Works : Supply and Fix Clay Roof Tiles

Projects : Al Mutahidah Tower VB 27-28 @ The Pearl
Clients : United Development Company - UDC
Value : QR. 545,000
Duration : Ongoing
Works : Supply and Fix Clay Roof Tiles

Projects : United School International @ The Pearl
Clients : United Development Company - UDC
Value : QR. 432,975
Duration : Ongoing
Works : Supply and Fix Clay Roof Tiles

Projects : 63 Villas Compound @ Madinat Khalifa
Clients : Al Majed Group
Value : QR. 234,186
Duration : Ongoing
Works : Supply and Fix Clay Roof Tiles

Projects : 33 Villas Compound @ Al Hilal
Clients : Al Majed Group
Value : QR. 122,669
Duration : Ongoing
Works : Supply and Fix Clay Roof Tiles



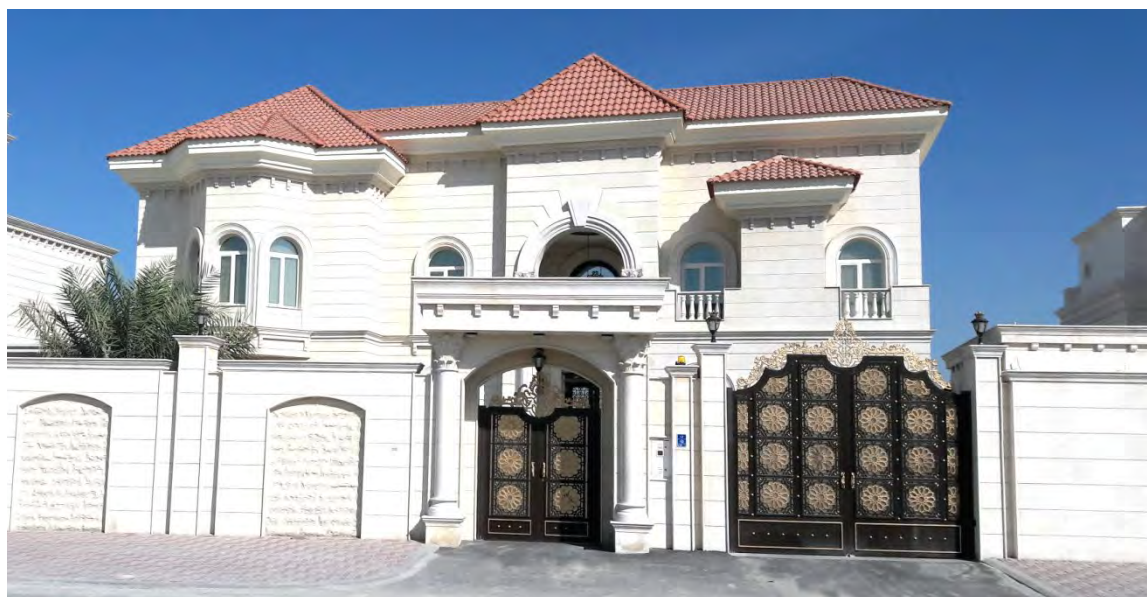
Villa in Izhawa



8 Villas in Hilal



Villa in Bani Hagre



Villa in Al Saad



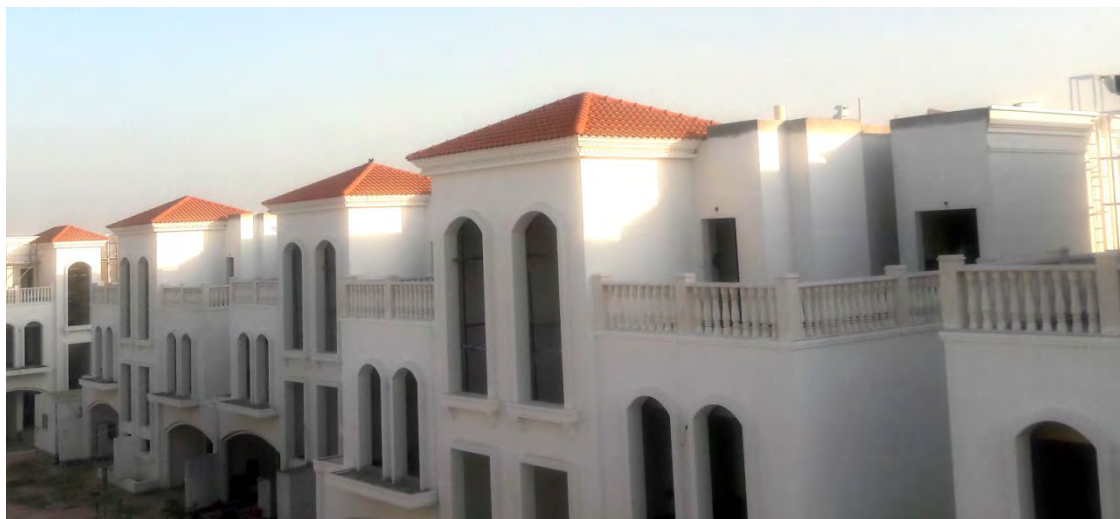
Residential Building in Fareej Abdel Aziz



8 Villas Housing Compound in Duhail



33 Villas Housing Compound in Al Hilal



63 Villas Housing Compound in Madinat Khalifa



10 Villas Giardino Village in The Pearl



Giardino Village Infrastructure Building in Pearl

CLAY ROOF TILE PRODUCTS



Portoghese BLUE



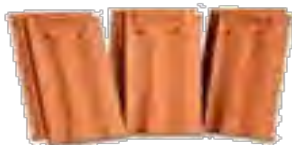
Portoghese GREEN



Qatar Flag



Portoghese Gold



Tegola Marsigliese



Villa Real



Portoghese Natural



Portoghese Glazed



Corte Antica



Corte Levante



Anticato Chiaro



Vintage



Portoghese Flexa



Nova



COPPODOC



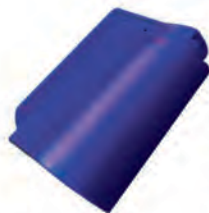
COPPODOC SUPERBO



COPPODOC LATINO



COPPODOC LAVAGNA



COPPODOC AZUL



Te.Si. Winter Atene



Marsigliese



**Ma.Xi.Ma. Winter
Ardesia**



Logica Plana



**Opera Pietra
Ardesia**



**MaXiMa fotovoltaica
Rossa**



BICOPPO® PIEMONTE



**Coppo Winter
Doppia Stella Alpina**



AUTENTICO



**Coppo fotovoltaico
Rosso**

CLAY ROOF TILE ACCESSORIES

ANTENNA
ANTENNA
COD. **RNRM00**



CAMINO MARSIGLIESE
MARSEILLE
CHIMNEY
COD. **WAMA20**



FERMANEVE
SNOW STOPPER
COD. **UMAR01**



LATERALE DX
RIGHT SIDE TILE
COD. **LAMADO**



AERATORE MARSIGLIESE
AERATOR FOR
MARSEILLE
COD. **A1MA11**



MEZZA
HALF-TILE
COD. **MZMA0**



LATERALE SX
LEFT SIDE TILE
COD. **LAMASO**



AERATORE PORTOGHESE
AERATOR FOR
PORTUGUESE
COD. **A1P-11**



ANTENNA
ANTENNA
COD. **RNRPO0**



CAMINO PORTOGHESE
PORTUGUESE
CHIMNEY
COD. **WAP-20**



DOPPIAONDA
DOUBLE-WAVE
COD. **DOP-0**



FERMANEVE
SNOW STOPPER
COD. **UPOR01**



LATERALE
UNIVERSAL SIDE
COD. **LAP-0**



COLMO 1
RIDGE TILE 1
COD. **KIT-1**



COLMO 2
RIDGE TILE 2
COD. **KIT-2**



FINALE
END RIDGE
COD. **FIT-0**



DUE VIE
TWO-WAY
COD. **DIT-0**



TRE VIE
THREE-WAY
COD. **VIT-0**

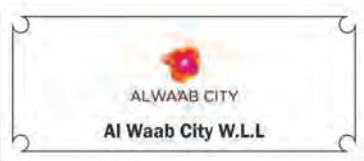


QUATTRO VIE
FOUR-WAY
COD. **QIT-0**



Consequently, the company have achieved their objectives is the degree of pride with which the company's final measure of how well the company's products are made and name of **Gulf Style Engineering** evokes in the Building Construction Market at large.

FEW OF OUR IMPORTANT CUSTOMERS:





Contact Detail

Unit -29 | Zone -55 | Street No -340 | G2 -Building 278

P.O. Box: 64122

Tel: +974-4431 2646 | Tel: +974-4435 8681

Fax: +974-4421 0407

Mobile: +974-6666 4492 | 50399280-81-82

info@gulfstylegroup.com | www.gulfstylegroup.com

